

COMMUNITY RESOURCE GUIDE

FOR MENTAL HEALTH



AT THE FOREFRONT
**UChicago
Medicine**



**Asian
Health
Coalition**

CENTER FOR ASIAN HEALTH EQUITY

For Afghan Communities
in the Greater Chicago area

ACKNOWLEDGMENTS

We would like to thank several organizations and individuals for their contribution to making this mental health community resource guide possible. Our partners at Muslim Women Resource Center and Indo-American Center provided insightful information on how to include culturally relevant material that addresses the mental health needs of the South Asian and Afghan community. They also shared information on local organizations that provide mental health and substance use services for South Asian and Afghan community members.

Additionally we would like to thank the Behavioral Health program staff at the Asian Health Coalition. Fornessa T. Randal, Executive Director, Yicklun Mo, Assistant Director, Nishita Conjeevaram, Senior Program Manager, Megan Sanico, Program Specialist, and Jessica Rubio, Senior Program Administrator, played a key role in developing this resource guide.

We also want to thank the University of Chicago Medicine and Center for Asian Health Equity research team for their contribution to this resource guide. Dr. Karen Kim, MD, Dr. Seeba Anam, MD, Helen Lam, Ph.D, Miwa Yasui, Ph.D, Sandra Yu Rueger, Ph.D, and Paula Lozano, Ph.D, shared their expertise and knowledge on the mental health information provided in this guide.

Finally, we are very appreciative for Kristin Salvador's contributions to the development, design, and production of this resource guide.

The Asian Health Coalition is a non-profit 501(c)(3) organization established in 1996 to improve the health and well-being of primarily Asians and Pacific Islanders, as well as African and other immigrant communities of color in Illinois through community-based education, capacity building, health advocacy, and research.

DISCLAIMER

This product was supported [in part] by the grant from Blue Cross Blue Shield of Illinois Affordability Cures Research, UC_AWD100558. The content of this publication does not necessarily reflect the views or policies of Blue Cross Blue Shield of Illinois.

This product was supported [in part] by grant number SM084399 from the Substance Abuse and Mental Health Services Administration (SAMHSA). The content of this publication does not necessarily reflect the views or policies of SAMHSA or the U.S. Department of Health and Human Services (HHS).

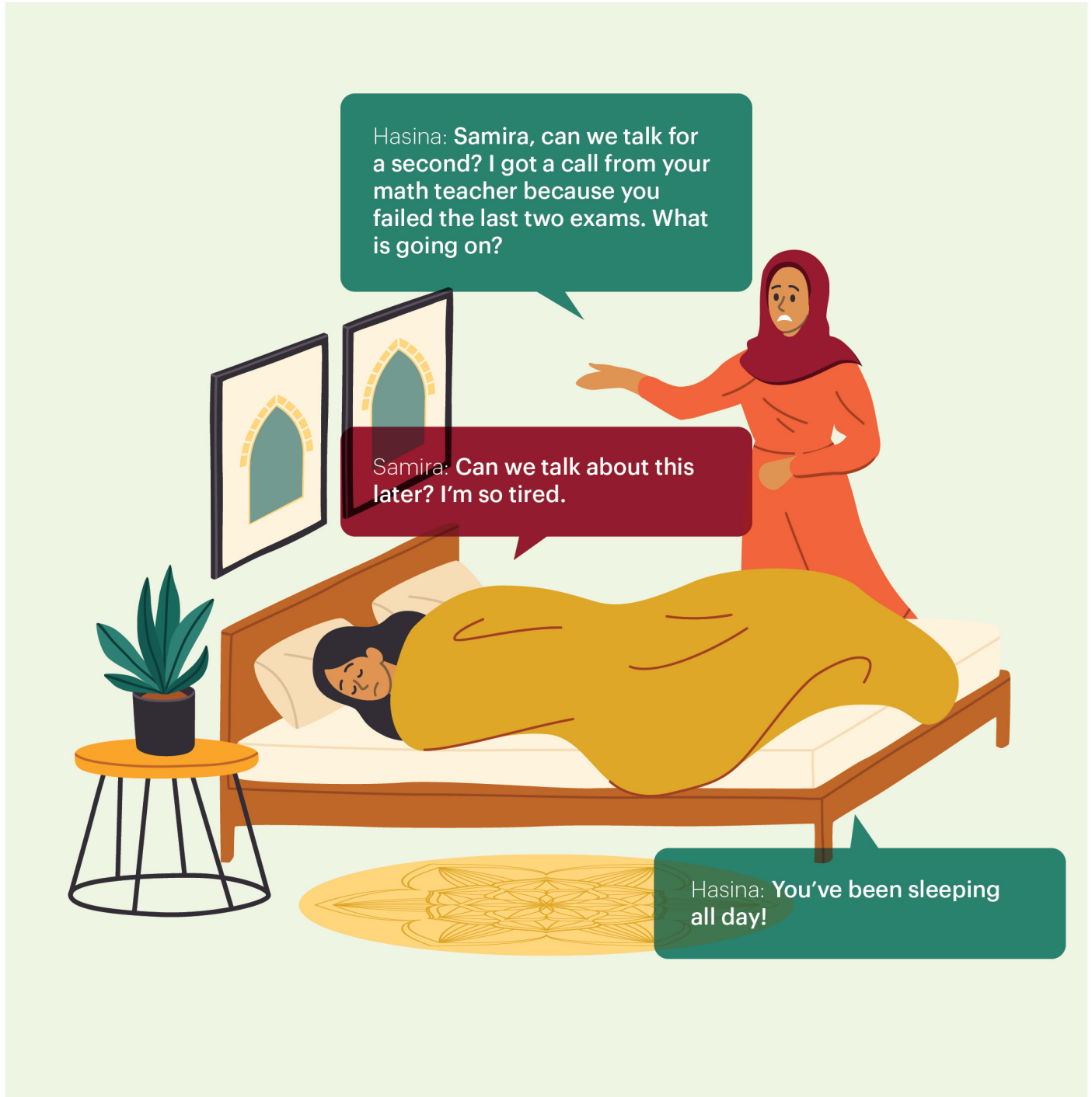
TABLE OF CONTENTS

04	Mental Health Story
14	WHAT IS MENTAL HEALTH?
18	MENTAL HEALTH DISORDERS
18	Depression
18	Bipolar Disorder
19	Psychosis
20	Anxiety Disorder
20	Post-traumatic Stress Disorder
21	Substance Use Disorder
22	Eating Disorders
23	Attention-Deficit Hyperactive Disorder (ADHD)
23	Disruptive Behavior Disorders
24	SUICIDE PREVENTION
26	TYPES OF TREATMENT
27	Counseling and Therapy
28	Medications
28	Types of Mental Health Professionals
30	Medication Myths
31	Therapy Myths
32	Tips on starting conversations and providing support
34	MENTAL HEALTH RESOURCES
34	What is Self-Care? Common Misconceptions
35	Self-Care Guide
36	Mental Health Services Directory

SOUTH ASIAN IMMIGRANT STORYLINE

INTRODUCTION

Hasina is a 40-year-old woman living with her 14-year-old daughter, Samira. Six months ago, they moved from Afghanistan to Chicago. Hasina's husband, Sajad, is back home in Afghanistan. Samira used to be very close to her father and is struggling to live without him. She is having trouble getting out of bed and is struggling in school. Hasina is angry and upset with how Samira is acting. After a conversation where Hasina shares her own struggles, Hasina takes it upon herself to reach out to a local community center to find help for the both of them.



Samira: Madar, I'm just not feeling well. Can I please sleep for another hour?

Hasina: This is not acceptable. Your father will not be happy to hear that you are not doing well in school.

Samira: I know... It is so difficult to study by myself. I can't concentrate. Pader used to help me study all the time. I miss him.



Hasina: **You know, I miss him too. I know it is hard adjusting here. I am struggling too.**



Samira is surprised to hear her mom admit this.



Samira: **You are?**

Hasina: **Yes.** I worry a lot about you and Pader. It keeps me up at night. I must wake up early to catch the train to work and I have been having trouble concentrating. I have been feeling off these days.

Hasina: **I am still getting used to living here.** Some days are so hard, I don't want to leave the house.





Samira: I feel the same way too, sometimes. I wish I felt differently.

Hasina: Me too, Samira. But please, study for your next exam so you can tell your father good news the next time you speak to him.



*Hasina is walking past her local community center.
Thinking about her conversation with Samira, she decides to go inside.*



Lina: Hi! My name is Lina. How can I help you?

Hasina: Is there someone I can speak to about my daughter, Samira? She is having a hard time lately, and I'm not sure how to help her.

Lina: I'm so sorry to hear that. Tell me a little more about it, I think we can help you with this situation.



Hasina: **She has trouble getting out of bed and is struggling in school. Her father is not here, and she really misses him. I don't know how to help her as I am going through my own challenges.**

Lina: **It sounds like you both are going through a hard time. We have a mental health resource guide that has helped many of our clients who are going through similar struggles. We can connect you both to therapy to help talk through your struggles.**

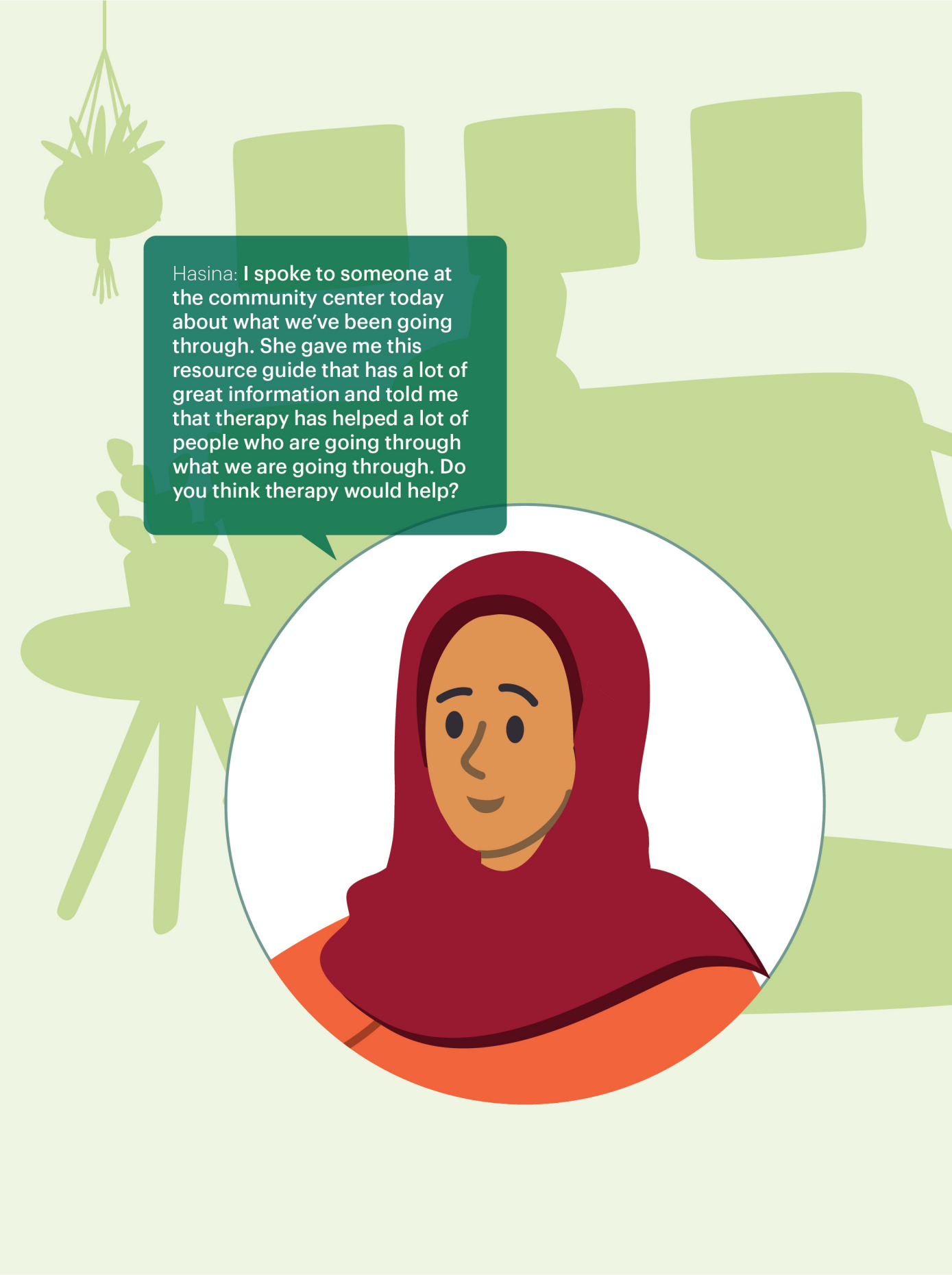
Hasina: **Thank you so much for your help, Lina. It has been so hard but now I feel like I can help Samira and myself. I am going to talk to her today about starting therapy.**



Hasina: Hi, Samira. I made you mantu. Can I talk to you for a second?

Hasina: I know that you have been having a hard time lately with school and missing your father. I'm sorry that I have been so hard on you. I am struggling, too.





Hasina: I spoke to someone at the community center today about what we've been going through. She gave me this resource guide that has a lot of great information and told me that therapy has helped a lot of people who are going through what we are going through. Do you think therapy would help?

Samira: **Therapy sounds like a great idea. Is this something that we can do together?**

Hasina: **Yes, we can go together. They can help us.**



Samira and Hasina smile at each other, feeling hopeful that both of their mental states will improve now that they have the support they need.

WHAT IS MENTAL HEALTH?

Mental health is an important part of overall health and well-being. Mental health includes our emotional, psychological, and social well-being. It affects how we think, feel, and act. It also helps determine how we handle stress, relate to others, and make healthy choices. Mental health is important at every stage of life, from childhood and adolescence through adulthood.

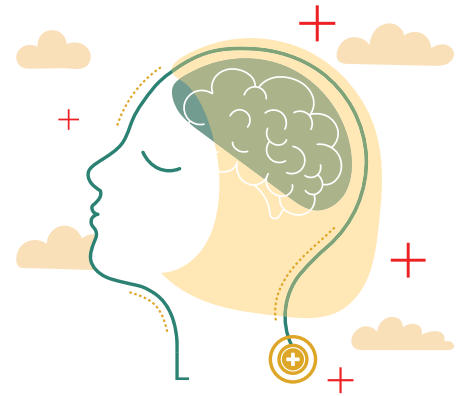
WHAT ARE MENTAL HEALTH DISORDERS?

Mental health disorders are diagnosable health conditions that impact our emotions, thoughts and behaviors. Mental health disorders can cause major stress and they can affect a persons' daily activities and relationships.

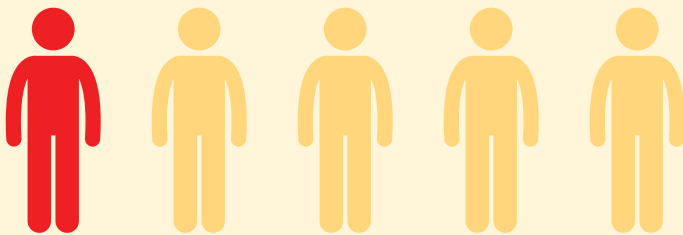


10 COMMON WARNING SIGNS OF A MENTAL HEALTH DISORDER

1. Feeling very sad or withdrawn for more than two weeks
2. Intense worries or fears that get in the way of daily activities
3. Extreme difficulty concentrating or staying still
4. Sudden overwhelming fear for no reason, sometimes with a racing heart, physical discomfort or difficulty breathing
5. Significant weight loss or gain
6. Seeing, hearing or believing things that aren't real
7. Excessive use of alcohol or drugs
8. Drastic changes in mood, behavior, personality or sleeping habits
9. Severe, out-of-control, risk-taking behavior that causes harm to self or others
10. Trying to harm or end one's life or making plans to do so

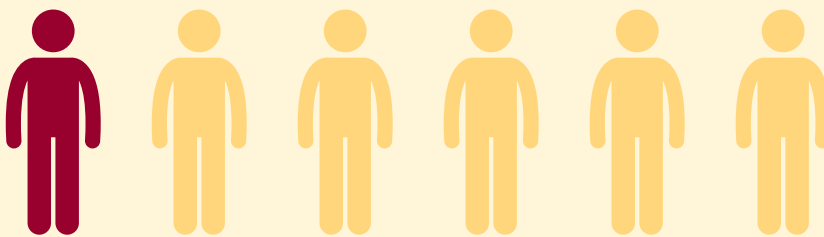


NATIONAL DATA



1 in 5

U.S. adults experience
mental illness each year



1 in 6

U.S. youth aged
6-17 experience
a mental health
disorder each year

Source: 2020 National Survey on Drug Use and Health. Retrieved from <https://www.samhsa.gov/data/>



Asian Americans are **three times less likely to seek help** for their emotional or mental health concerns than White Americans (American Psychological Association).



Suicide is the 10th leading cause of death for Asian Americans (The Office of Minority Health).



Asian American women ages 15-24 and 65 and older have the highest suicide rates among women across all racial/ethnic groups (National Alliance on Mental Illness & Centers for Disease Control and Prevention).



Many refugees from war-torn Southeast Asian countries suffer from mental illness, **50-70% suffer from post-traumatic stress disorder**, 40% suffer from depression, and 35% suffer from anxiety (National Asian American Pacific Islander Mental Health Association).

BARRIERS

There are several barriers to care that contribute to the mental health outcomes for the Asian American community.

- Overall, 32.6% of Asian Americans are not fluent in English. **Language barriers** can make communicating with providers difficult, especially when a person is seeking counseling for personal issues.
- **Stigma** also plays a huge role in preventing people from accessing care. Lack of knowledge about mental illness and stigma associated with mental health issues can lead to delaying seeking out mental health services.
- The **“model minority”** stereotype is another barrier to care. This is the prevalent assumption that portrays Asian Americans as being more successful, such as financially and academically, and conforming to social norms. The social and familial pressure created by this stereotype can prevent community members from seeking mental health care.

Below you will find data specifically looking at mental health and substance use among Afghan community members in Chicago.

AFGHAN COMMUNITY IN CHICAGO

Coalition for Healthy Asian Minds Program (CHAMP) Survey

From 2019 to 2021, Asian Health Coalition conducted the Chicago Asian Health Survey in order to collect health information on various Asian ethnic groups in Chicago. Below are some of the survey results from the Afghan community in Chicago.

Warning Signs

- **29%** of Afghani participants showed symptoms of anxiety or depression
- **37%** of Afghani participants agreed or strongly agreed with the statement that if they had a mental health problem and people at work knew about it, their career/job options would be limited

Stigma Beliefs

- **41%** of Afghani participants agreed or strongly agreed with the statement that if they had a mental health problem and friends and family knew about it, their friends and family would feel uncomfortable around them
- **35%** of Afghani participants agreed or strongly agreed with the statement that they would feel uncomfortable talking about their problems with a mental health provider

Next, we'll learn about some of the common mental health disorders.

DEPRESSION

Depression is more than just feeling sad or blue, and sometimes may not even involve feeling sad. There are many different symptoms of depression.

Some common symptoms include:

- Feeling sad or having a depressed mood most of the day
- Losing interest in activities you would normally enjoy
- Change in appetite, with possible unplanned weight loss or weight gain
- Trouble sleeping or sleeping too much
- Change in speech or movement – either slowed down or more rapid and fidgety
- Lack of energy or feeling tired even when you seem to be getting enough sleep
- Feeling worthless or excessive guilt
- Difficulty thinking, concentrating, or making decisions
- Thoughts of death or suicide¹

You don't have to experience all of these symptoms to be depressed, but experiencing even two of these symptoms every day for two weeks may be a sign that you need to seek professional help.

Children and youth can show irritability rather than sad, depressed mood.

You don't have to experience all of these symptoms to be depressed, but significant change in even two of these symptoms that makes it hard for you at home, school/work, or with other people can be a sign that you are depressed.¹

QUICK FACTS

In 2020, 4.2% OF ASIANS aged 18 and older experienced depression.³

BIPOLAR DISORDER

Bipolar disorder causes periods of extreme high energy mood as well as extreme low energy and mood. This mental health condition includes both manic and depressive episodes that can last months, and is more than just being "moody".

Individuals must experience at least one manic episode. A manic episode is a period when a person is extremely high-spirited, euphoric, and "on top of the world" or irritable, and has more energy than usual for at least one week. Importantly, these episodes reflect a change from someone's regular baseline mood and behavior. However, they often make decisions that they regret later, and symptoms can be so serious that people need to be hospitalized.¹

A manic episode may also include:

- Decreased need for sleep
- Faster speech
- Racing thoughts
- Being easily distracted
- Increased activity whether it seems purposeful and productive or not
- Impulsive behavior, like spending too much money or having risky sex
- Being out of touch with reality, like seeing or hearing things that other people do not see or feeling paranoid

Most people feel great during manic episodes so they do not realize there is a problem and refuse treatment.

A manic episode that lasts at least 4 days is called "Hypomania" and is a less severe form of bipolar disorder.

QUICK FACTS

Bipolar Disorder AFFECTS MEN AND WOMEN EQUALLY, with about **2.8%** of the U.S. population diagnosed with bipolar disorder⁴

PSYCHOSIS

Psychosis refers to an alteration in a person's sense of reality. Symptoms of psychosis can show up in one's perceptions, behaviors, and thoughts.

Psychotic behaviors include:

- Hearing sounds or voices that others don't hear
- Seeing things that other people do not see
- Atypical speech patterns or responding to internal conversations
- Disorganized or disordered behavior
- Change in ability to express emotion
- Paranoia or bizarre fears that don't go away that are not based in reality
- Believing that people can read your mind, or that individuals are being watched
- Holding on to false beliefs despite clear or reasonable evidence that they are not true¹

- Psychotic symptoms can range from mild to severe.
- Although most people think of psychosis as a mental health condition, it is a symptom that can be part of different mental health disorders, such as schizophrenia, bipolar disorder, or depression.
- Some people experiencing psychosis often have spiritual or supernatural explanations for what is happening to them.¹

QUICK FACTS

Psychotic disorders typically begin in **EARLY ADULTHOOD.**²



ANXIETY DISORDER

Anxiety disorders result from excessive anxiety and fears and can involve uncontrollable worrying or physical symptoms of stress.

Some common symptoms include:

- Feeling restless
- Irritability
- Difficulty concentrating
- Physical symptoms including muscle pain, tightness,, palpitations, feeling shaky
- Trouble falling asleep or staying asleep
- Feeling exhausted even after a full night's sleep
- Going out of your way to avoid situations that make you anxious
- Unwanted thoughts or worries that won't go away¹

Anxiety is a normal emotion that everyone feels when there is a threat of some sorts, and a little anxiety can actually be useful. However, when anxiety starts to interfere with people's daily lives, they might have an anxiety disorder, such as

- Phobias: extreme fear of an object, experience or sensation
- Social Anxiety Disorder: fear of social situations, evaluation, and rejection
- Generalized Anxiety Disorder (GAD): excessive and uncontrollable worrying
- Obsessive-Compulsive Disorder (OCD): intrusive thoughts and uncontrollable behaviors¹

QUICK FACTS

20.1% OF ASIANS reported symptoms of an anxiety disorder over the course of a 2-week time period.

POST-TRAUMATIC STRESS DISORDER

Post-traumatic stress disorder is a response to the experience of a traumatic event.

Symptoms of PTSD include:

- Repeatedly thinking about the traumatic event, such as through flashbacks or nightmares
- Avoiding reminders of the traumatic event like people, places, activities, objects and situations
- Being constantly alert or on guard, easily startled, or hyper-aware or your surroundings
- Intense negative emotions, such as extreme fear, irritability or guilt, or negative thoughts, such as beliefs that no one can be trusted,

Other associated difficulties can include:

- Inability to remember important aspects of the trauma
- Inability to experience positive emotions
- Physical symptoms, like chronic pain or headaches
- Substance use problems
- Relationship problems
- Other mental health conditions, such as depression or anxiety¹

Examples of traumatic events that are typically associated with PTSD include life-threatening events such as:

- Natural disasters
- Violent attacks
- Car accidents
- Childhood abuse or neglect

In some cases, learning about a traumatic event in a close family member or friend can lead to PTSD.¹

QUICK FACTS

Women are **SIGNIFICANTLY** more likely to experience PTSD than men.³



SUBSTANCE USE DISORDERS

A substance use disorder (SUD), or what many people commonly refer to as “addiction,” involves an individual’s inability to control their use of alcohol or drugs.

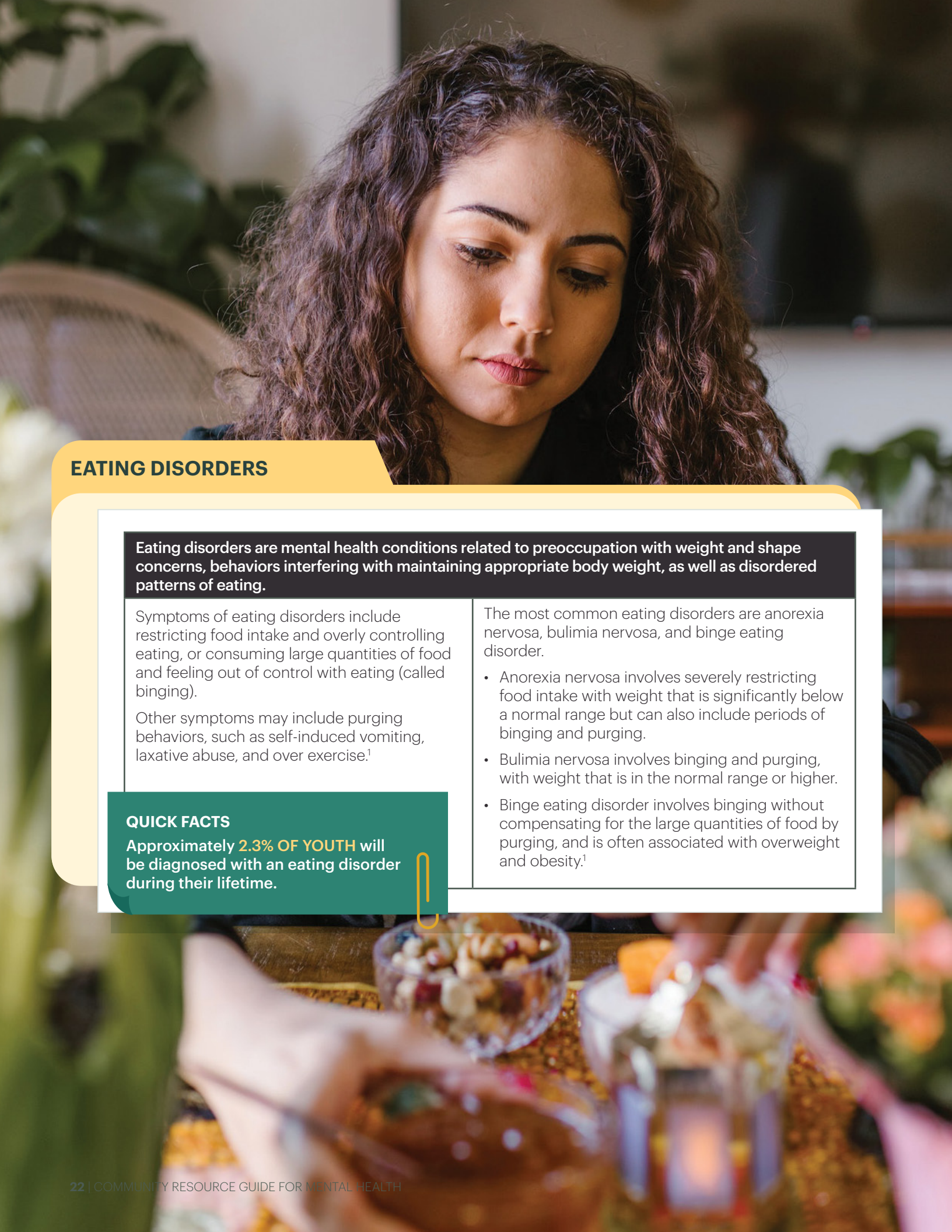
A SUD can include the following symptoms:

- A craving or strong urge to use the substance, or a great deal of time using or recovering from the effects of the substance
- Continued use of the substance despite known problems, such as interpersonal, psychological, or physical problems, or failure to fulfill obligations at home, school or work
- Using more of the substance than intended, and eventual need for larger amounts of substance to get the same effect
- Continued use of the substance in physically dangerous situations, such as driving, swimming or operating machinery
- Unsuccessful efforts to cut down or control substance use.
- Physical dependence on the substance that can lead to unpleasant and sometimes life-threatening symptoms when the substance is not used¹

It is common for individuals to abuse and be addicted to more than one substance or for mental health conditions to co-occur with a substance use disorder, including mood disorders and anxiety disorders. It is important to treat these co-occurring disorders.¹

QUICK FACTS

10% OF ASIAN AMERICAN ADULTS had a substance use disorder in 2020.³



EATING DISORDERS

Eating disorders are mental health conditions related to preoccupation with weight and shape concerns, behaviors interfering with maintaining appropriate body weight, as well as disordered patterns of eating.

Symptoms of eating disorders include restricting food intake and overly controlling eating, or consuming large quantities of food and feeling out of control with eating (called bingeing).

Other symptoms may include purging behaviors, such as self-induced vomiting, laxative abuse, and over exercise.¹

The most common eating disorders are anorexia nervosa, bulimia nervosa, and binge eating disorder.

- Anorexia nervosa involves severely restricting food intake with weight that is significantly below a normal range but can also include periods of bingeing and purging.
- Bulimia nervosa involves bingeing and purging, with weight that is in the normal range or higher.
- Binge eating disorder involves bingeing without compensating for the large quantities of food by purging, and is often associated with overweight and obesity.¹

QUICK FACTS

Approximately **2.3% OF YOUTH** will be diagnosed with an eating disorder during their lifetime.

ATTENTION-DEFICIT HYPERACTIVE DISORDER (ADHD)

Attention-deficit hyperactive disorder (ADHD) is one of the most common mental health conditions in childhood in which hyperactivity, inattention, impulsivity, or a combination is noticeably greater than expected for their age.

Symptoms of ADHD include:

- Difficulty paying close attention to details or making careless mistakes in school or job tasks.
- Problems staying focused on tasks or activities, or following through on instructions
- Difficulty listening when spoken to
- Problems organizing tasks and work, or often loses things needed for tasks or daily life
- Is easily distracted, or forgets daily tasks, such as doing chores and running errands.
- Fidgets with or taps hands or feet, squirms in seat, runs about or climbs where it is inappropriate
- Has difficulty waiting their turn, such as while waiting in line, or interrupts or intrudes on others⁵

ADHD often persists into adulthood, although the symptoms may not be as clearly evident.

As adults, an individual may not continue with hyperactive behavior, but continue to struggle with impulsivity, restlessness and difficulty paying attention.

They also may have challenges in prioritizing tasks, planning and organizing, as well as low frustration tolerance and difficulties in managing stress.⁷

QUICK FACTS

Approximately **4.2% OF YOUTH** will be diagnosed with ADHD during their lifetime.²

DISRUPTIVE BEHAVIOR DISORDERS

Disruptive behavior disorders involve a pattern of defiant and oppositional behavior by children and adolescents.

Oppositional defiant behavior involves uncooperative and argumentative behaviors and can also include:

- Refusing to follow rules
- Deliberately annoying others
- Blaming others for their mistakes
- Angry outbursts, and resentful, vindictive ways.⁶

Conduct disorder involves more severe forms of disruptive behaviors including aggression and cruelty toward people and animals, destruction of property (e.g., deliberate fire setting, vandalism), deceitfulness or theft (breaks into properties, manipulates others), or serious violations of rules (e.g., runs away from home, truant from school)⁶

QUICK FACTS

Approximately **6.5% OF YOUTH** will be diagnosed with one of these disorders during their lifetime.⁶

¹ American Psychiatric Association. (2013). *Diagnostic and statistical manual of mental disorders* (5th ed.). <https://doi.org/10.1176/appi.books.9780890425596>

² Mental Health America. (2022). *Conditions*. <https://mhanational.org/conditions>

³ Mental health by the numbers. NAMI. Retrieved from <https://www.nami.org/mhstats>

⁴ U.S. Department of Health and Human Services. Bipolar disorder. National Institute of Mental Health. <https://www.nimh.nih.gov/health/statistics/bipolar-disorder>

⁵ Centers for Disease Control and Prevention. (2022, August 9). *Symptoms and diagnosis of ADHD*. Centers for Disease Control and Prevention. Retrieved from <https://www.cdc.gov/ncbddd/adhd/diagnosis.html>

⁶ Disruptive behavior disorders. (DBD): Symptoms, Diagnosis and Treatment. (n.d.). Retrieved from <https://www.nationwidechildrens.org/conditions/disruptive-behavior-disorders>

⁷ Mayo Foundation for Medical Education and Research. (2019, June 25). *Attention-deficit/hyperactivity disorder (ADHD) in children*. Mayo Clinic. Retrieved from <https://www.mayoclinic.org/diseases-conditions/adhd/symptoms-causes/syc-20350889>

SUICIDE PREVENTION

WHAT IS SUICIDE?

Suicide is death caused by injuring oneself with the intent to die. A suicide attempt is when someone harms themselves with an intent to die, but they do not die after harming themselves.

WARNING SIGNS

The following are signs to look out for when you are concerned that a person may be suicidal:

- Talking about killing themselves
- Talking about feeling hopeless
- Talking about having no reason to live
- Talking about being a burden to others
- Talking about feeling trapped
- Talking about unbearable pain
- Increased use of alcohol or drugs
- Withdrawing from activities
- Isolating from family and friends
- Sleeping too much or too little
- Visiting or calling people to say goodbye
- Giving away prized possessions
- Aggression



WHAT YOU CAN DO TO HELP:

Have an honest conversation

1. Talk to them in private
2. Listen to their story
3. Tell them you care about them
4. Ask directly if they are thinking about suicide
5. Encourage them to seek treatment or contact their doctor or therapist
6. Avoid debating the value of life, minimizing their problems or giving advice

TAKE THE TIME TO REACH OUT IF YOU ARE CONCERNED ABOUT SOMEONE... DON'T ASSUME THAT OTHERS WILL REACH OUT

Talk in Private

Listen to their story, and let them know you care. Ask directly about suicide, calmly and without judgement. Show understanding and take their concerns seriously. Let them know their life matters to you. That one conversation could save a life.

IF A PERSON SAYS THEY ARE THINKING ABOUT SUICIDE

Take the Person Seriously

- Take the person seriously
- Stay with them
- Help them remove lethal means
- Call the [National Suicide Prevention Lifeline: 988](#)
- Text TALK to [741741](#) to text with a trained crisis counselor from the [Crisis Text Line](#) for free, 24/7
- Escort them to mental health services or an emergency room

IF YOU'RE STRUGGLING

Don't Wait for Someone to Reach Out

Seek mental health treatment, or tell your clinician about your suicidal thinking. Treat yourself like you would treat someone else who needs your help.

TYPES OF TREATMENT

Treatment is not a one size fits all approach. Where you go for mental health care treatment and services depends on your situation and recovery needs. It is normal for people to need a combination of treatments and services too. Primary care doctors and mental health professionals can go over the best options for you and provide more information.



COUNSELING AND THERAPY

Psychotherapy

Psychotherapy is a type of treatment of mental illness provided by a trained mental health professional. Psychotherapy explores thoughts, feelings, and behaviors, and seeks to improve an individual's well-being.

Types of psychotherapy include:

- **Individual:** This therapy involves only the patient and the therapist.
- **Group:** Two or more patients may participate in therapy at the same time.
- **Marital/couples:** This type of therapy helps spouses and partners understand why their loved one has a mental disorder. This type of therapy can also be used to help a couple that is struggling with aspects of their relationship.
- **Family:** This type of therapy helps family members to understand what their loved one is going through, how they themselves can cope, and what they can do to help.

Support Group

A support group is a group meeting where members guide each other towards the shared goal of recovery. Support groups are often comprised of nonprofessionals, but peers that have suffered from similar experiences.

Self-help Plan

A self-help plan is a unique health plan where a person addresses his or her condition by implementing strategies that promote wellness. Self-help plans may involve addressing wellness, recovery, triggers or warning signs.

Recovery Support Services

Recovery support services include continuing care, mutual self-help groups (such as 12- step programs) and peer recovery support services. These services provide a community setting where fellow recovering persons can share their experiences and provide mutual support to each other's mental health and/or substance use challenges.

HOSPITAL CARE AND OTHER SERVICES

Case Management

Case managers have knowledge of local medical facilities, housing opportunities, employment programs and social support networks. They are also familiar with many payment options, and can serve an important role in helping a person get the best treatment possible.

Hospitalization

In a small number of cases, hospitalization may be necessary so that an individual can be closely monitored, accurately diagnosed or have medications adjusted when the person's mental illness temporarily worsens.

MEDICATIONS

A medication is a drug used to treat various health conditions, including mental health disorders.

The following are examples of medications commonly used to treat mental health disorders.

Antidepressants

Antidepressants are medications commonly used to treat depression, anxiety disorders and trauma-related symptoms.

Anti-Anxiety Medications

Anti-anxiety medications help reduce the symptoms of anxiety, such as panic attacks or extreme fear and worry.

Antipsychotics

Antipsychotic medications are mainly used to treat psychotic disorders. They may also be used to treat mood disorders and bipolar disorders.

Mood Stabilizers

Mood stabilizers are used primarily to treat bipolar disorder.

Stimulants

Stimulant medications are commonly used to treat attention-deficit/hyperactivity disorder (ADHD) and narcolepsy (sleep disorder).

Source: U.S. Department of Health and Human Services. (n.d.). Mental health medications. National Institute of Mental Health. <https://www.nimh.nih.gov/health/topics/mental-health-medications>

TYPES OF MENTAL HEALTH PROFESSIONALS

A mental health professional is someone who offers services to improve an individual's mental health. There are many types of mental health professionals. Below are some examples of the different types of mental health professionals and services they offer.

Primary Care Physician

When people first start to develop a mental illness, they may go to a primary care physician (PCP) first for help. A PCP can provide immediate support and can connect people to mental health specialists for mental health treatments if needed. They can also provide medications for mental health disorders.

Psychiatrists

Psychiatrists are medical doctors that treat people with mental health disorders. They can provide medication for mental health disorders and can help people understand the side effects of medications and how different medications interact with one another. They can provide assessments of mental health conditions and provide counseling and therapy as well.

Clinical Psychologist

Clinical psychologists have a doctoral degree and provide psychological testing and counseling services to assess and treat mental, emotional and behavioral disorders. They may work with individuals, couples, families, or groups.

Mental Health Nurse

Registered nurses who have clinical training in mental health. In many states, these nurses can give medications and recommend treatments with physician supervision.

Licensed Clinical Social Worker

A counselor with at least a master's degree in social work from an accredited graduate program. Trained to make diagnoses, provide individual and group counseling, and provide case management and advocacy; usually found in the hospital setting.

Licensed Professional Counselor

A mental health counselor with at least a master's degree, or a doctoral degree, in psychology, counseling or a related field. Trained to diagnose and provide individual and group counseling.

Licensed Marital and Family Therapist

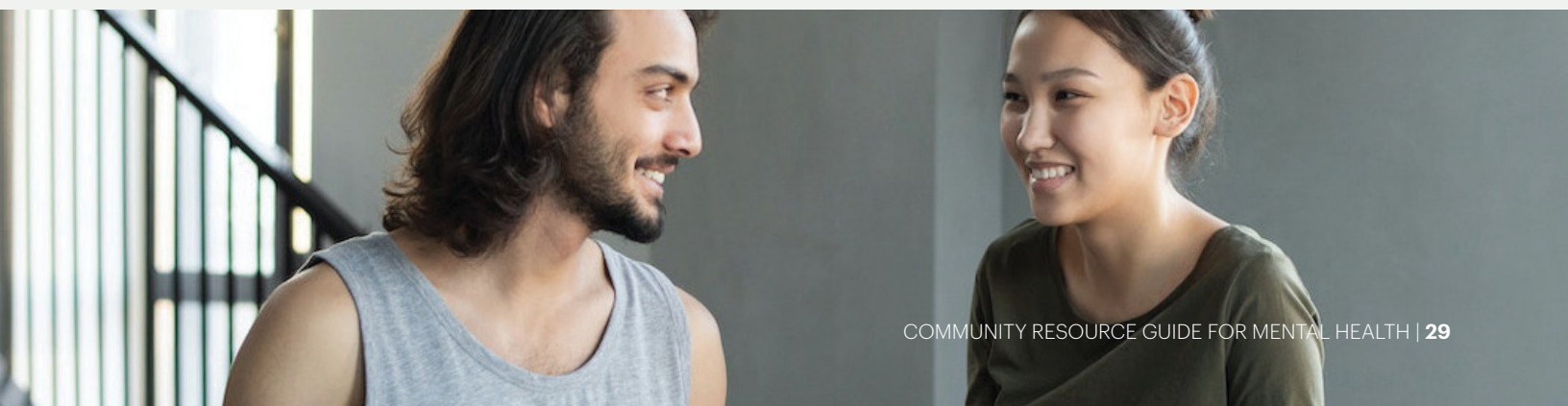
A mental health counselor with a master's or doctoral degree, with special education and training to assess and address relationship issues. They are trained to work with individuals of all ages, couples, and families.

Certified Alcohol and Drug Counselor

A counselor who provides individual or group alcohol and drug counseling services. They are trained to work with clients to help them better understand and overcome their addictions.

Certified Peer Specialist

Certified Peer Specialists have lived experience with mental health or substance use conditions. Assists clients with recovery by recognizing and developing strengths and setting goals. Many peer support programs require several hours of training.



MEDICATION MYTHS

Myth: People who take medication are weak.

Medication isn't a sign that people are 'giving up' and 'taking the easy option'. In fact, medications can be an effective way of helping people more quickly and learn problem solving skills more efficiently.

Myth: Once you start taking medication, you have to be on it for life.

Most people take medication for a limited period of time, often 6 months to a year. Some people may take medication for a longer period of time, but this depends greatly on the situation and the diagnosis. Every person and situation is different.

Myth: People who need medication for their mental health are dangerous

People with mental illness, including people who take psychiatric medications, are more likely to be targets of danger or violence rather than cause it themselves, including people who take psychiatric medications.





THERAPY MYTHS

1. “Everyone will find out about my problems if I go to a therapist.”

Therapists are required by law to keep things confidential. Confidentiality is needed so that you can trust your therapist to talk about personal information.

2. “I don’t need therapy. I have friends and family.”

Even though it’s important to have a support system, like friends and family, you might find that you can’t always talk to them about everything. You might find that there are still some things that you do not feel comfortable sharing with them. For example, it may be harder to talk to family and friends about things that might hurt their feelings. When you meet with a therapist, you can share your true feelings with someone who can support you with an objective perspective. When you meet a

therapist, you don’t have to hide your true feelings.

3. “I don’t need therapy because I don’t have serious problems.”

There are multiple reasons to seek therapy, whether it’s depression, anxiety, trauma, stressful home and work life, or understanding more about your relationships. Typically, the longer people wait to start therapy, the worse the problem might get, and the longer it might take to resolve the problem.

4. “Couples therapy is only for those heading for a divorce.”

Couples therapy is beneficial, even for couples in healthy relationships. Just like individual therapy, it’s beneficial to share your true feelings and resolve issues with a therapist to maintain a healthy relationship.

TIPS ON STARTING CONVERSATIONS AND PROVIDING SUPPORT

1. Start a conversation

If you're concerned about someone, the first thing to do is to check in. It can be as simple as a text: just make sure they know you really want to know how they're doing.

2. Listen and reflect

Give the person space to explain what they're going through. Try not to make any assumptions about their experience based on other things you've seen and read. Asking open questions can be helpful; these are questions that invite people to expand, rather than respond with just 'yes' or no.

Examples of open questions include:

"How have you been feeling?"

"What's that like for you?"

3. Be patient

It might take a while for the person to feel comfortable talking about what they're going through, or there might be periods where they're less communicative. That's understandable; sometimes, if you're experiencing a mental health problem, it's harder to be sociable. It might feel frustrating if you're putting in effort, but try and be patient. They probably appreciate you being in touch even if they're not responding.

4. Be yourself

Even if they're having a hard time, they're still the same person you know and love. Don't treat them differently – keep including them in social activities and offer to do the things you'd normally do with them.

5. Ask how you can help

Give them space to say what they need from you. This might be a regular check-in, a particular activity, or help with practical things. Mental health problems can be draining, so they might be finding it hard to keep up with everyday tasks. If it seems appropriate, ask if there is anything you can help with.







MENTAL HEALTH RESOURCES

WHAT IS SELF-CARE?

Self-care means taking the time to do things that help you live well and improve your physical health and mental health.

COMMON MISCONCEPTIONS

a. Self-care is selfish.

When you take time for yourself, you feel more energetic and are less likely to lash out or project your negative feelings on others. It's actually one of the healthiest things you can do to recharge and connect with those around you.

b. Self-care takes too much time.

We are all busy, but self-care does not require a huge chunk of time from your busy day. Add some self-care time to your schedule and plan your day around it.

c. Self-care is expensive

Simple actions like meditation, getting to bed early, or going for a walk, can all be low-cost acts of self-care.

ESPECIALLY FOR PARENTS: PUT ON YOUR OWN MASK FIRST!



Just as you are instructed to put on your oxygen mask in an emergency first before helping your child, it is important to take care of your own needs in order to best take care of the needs of your children and loved ones.

SELF-CARE GUIDE

Types of Self-Care

Get regular exercise

1. Go for a walk
2. Take a workout class
3. Yoga
4. Any physical activity you enjoy!

Eat healthy meals and drink lots of water

1. Whole grains
2. Fruits
3. Vegetables
4. Avoid too much sugar and junk food
5. Make home-cooked meals

Make sleep a priority

1. We need at least 7 hours of sleep a night!
2. Short naps during the day are also helpful

Try a relaxing activity

1. Meditation or breathing exercises
2. Read a book
3. Take a bath
4. Gardening or indoor planting
5. Skin care and spa activities

Stay connected

1. Spend time with friends or family members or talk to loved ones over the phone
2. Volunteer in your community. Volunteer examples include spending time with seniors at a nursing home, donating clothes to a homeless shelter, and serving food at a soup kitchen.
3. Go to church or other religious services with family or friends.

MENTAL HEALTH SERVICES DIRECTORY

If you are **insured**, find out from insurance company who you can go to in your network.
 If you are **medicaid** recipients, **medicare** recipients or **uninsured**, use this guide.

EMERGENCY OR CRISIS RESOURCES

For Emergency Assistance

Phone: 911

Crisis Text Line

Text: "HOME" to 741741

24-Hour Chicago Rape Crisis Hotline

Phone: (888) 293-2080

24-Hour Illinois Domestic Violence Hotline

Phone: (877) 863-6338

National Suicide Prevention Lifeline

Call or text: 988

24-Hour LGBT National Hotline

Phone: (888) 843-4564

National Domestic Violence Hotline

Phone: 800) 799-SAFE (7233)

National Sexual Assault Hotline

Phone: (800) 656-HOPE (4673)

FINDING PROVIDERS

Community of Asian-American Therapists in Chicagoland (CAATCH)

Web: <https://www.caatch.info/>

City of Chicago Unspoken – Mental Health Provider Locator

Web: <https://mentalhealth.chicago.gov/find-mental-health-support/>

Illinois Department of Human Service – Mental Health Provider Locator

Web: <https://www.dhs.state.il.us/page.aspx?module=12&officetype&county>

Illinois Helpline for Opioids & Other Substances-Substance Use Treatment Providers Locator

Web: <https://hub.helpineil.org/findhelp>

Substance Abuse and Mental Health Services Administration (SAMHSA) Provider Locator

Web: <https://findtreatment.samhsa.gov/>

Are you Really Winning?: Illinois Gambling Disorder Service Providers

Web: <https://e.helpineil.org/areyoureallywinning/>

AFGHAN-SERVING ORGANIZATIONS

Organizations that work towards improving social health, well-being and overall functioning for South Asian and Afghan community members.

ORGANIZATION	CONTACT INFORMATION	SERVICES	LANGUAGE	POPULATION
Indo-American Center	Address: 6328 N California Ave, Chicago, IL 60659 Phone: (773) 973-4444 Email: info@indoamerican.org Web: https://indoamerican.org/	Adult Literacy, Art Therapy, Community Health Education, Immigration and Citizenship, Public Benefits, Senior Services, Workforce Development	English, Hindi, Urdu	Youth Adult
Muslim Women Resource Center	Address: 2828 W Devon Ave, Chicago, IL 60645 Phone: 773-764-1686 Web: http://www.mwrcnfp.org/	Counseling, Immigration and Citizenship, Social services, Adult and Youth Education Programs, Health Education, Women's Support Group	English, Hindi, Urdu, Farsi	Youth Adult
Metropolitan Asian Family Services	Address: 7541 N Western Avenue, Chicago IL 60645 Phone: (773) 465-3105 Web: https://mafsinc.com/	Nutrition Program, Public Benefits, Adult Education, Senior Services, Home Care, Health Education, Health Screenings	English, Hindi, Urdu, Gujarati, Spanish, Bosnian	Adult

OTHER COMMUNITY-BASED ORGANIZATIONS

Organizations that work towards improving a community's social health, well-being, and overall functioning.

ORGANIZATION	CONTACT INFORMATION	SERVICES	LANGUAGE	POPULATION
Apna Ghar	Address: 4350 N. Broadway, 2nd Floor, Chicago, IL 60613 Phone: 773.334.4663 Email: info@apnaghar.org Web: www.apnaghar.org	Gender violence/domestic violence services	Arabic, Hindi/Urdu, Spanish, Tigrinya, Amharic, Tamil, Polish, French, Italian, English	Youth Adult
Asian Human Services	Address: 2838 W. Peterson Ave. Chicago, IL 60659-2507 Phone: 773.293-8430 Web: https://ahschicago.org/community-health/	HIV/AIDS prevention and care programs; disability and vocational services; school based violence prevention, smoking cessation, obesity prevention and healthy living, Hepatitis B Awareness education, immunization campaigns, breast and cervical cancer prevention, individual and group therapy	English, Korean, Urdu, Hindi, Arabic, Spanish	Children Youth Adult
Between Friends	Address: P.O. Box 608548 Chicago, IL. 60660 Phone: 773.274.5232 Crisis Line: 800.403.HELP 4357) Web: https://betweenfriendschicago.org/get-help/counseling/	Domestic violence crisis intervention	Spanish, Arabic, French, English	Adult
Catholic Charities, The Encompassing Center	Address: 3019 W Harrison St, Chicago, IL 60612 Phone: 773.638.5703 Web: https://encompassingcenter.org/services	Depression Related Disorders, Trauma Related Disorders, Anxiety Disorders, Impulsive Conduct Disorders, Substance Related Disorders, Anger Management Disorders, Other Disorders	English, Spanish	Adult
Casa Central	Address: 1343 N California Ave, Chicago, IL 60622 Phone: 773.645.2300 Email: info@casacentral.org Web: https://www.casacentral.org/	Transitional housing services, violence prevention and intervention, employment training, day care and after school sessions, Adult Wellness Center and Home Care Services program	English, Spanish	Children Youth Adult
Center on Halsted	Address: 3656 N. Halsted Street, Chicago, IL 60613 Phone: 773.472.6469 Web: https://www.centeronhalsted.org/cohoverview.html	Psychotherapy Services: Individual, relationship, family, and group therapy. Time-limited therapy groups currently available: HIV Positive Support, Coming Out, LGBTQ People of Color; Bi+, Dialectical Behavioral Therapy DBT-for Trauma, Trauma Support Group, Trans and Gender Non-Conforming, Men's, Women's, and Grief and Loss	English, Spanish	Youth Adult LGBTQ+
Consuelo Therapeutic Services	Address: 6149 South Kenneth Ave. 2nd Floor, Chicago IL 60629 Phone: 773.770.5150 Web: http://www.consueloinc.org/	Individual and family counseling	English, Spanish	Children Youth Adult
Hanul Family Alliance	Address: 5008 N. Kedzie Ave., Chicago, IL, 60625 Phone: 773-478-8851 Email: hanul@hanulusa.org Web: https://hanulusa.org/	Mental Health Disorders, Substance Related Disorders, Individual/Group Counseling, Couple/Family Counseling, Career Counseling, Home Care Services, Senior Nutrition Programs, Public Benefit Assistance, Community Health Workshops	English, Korean	Youth Adult
Healthcare Alternative System	Address: 2755 W. Armitage Ave. Chicago, IL 60647 Phone: 773.252.3100 Web: https://www.hascare.org/	Psychotherapy, Substance abuse prevention and treatment, domestic violence, transitional housing	English, Spanish	Youth Adult
KAN-WIN	Phone: 773.583.1392 Email: mkim@kanwin.org Web: www.kanwin.org	24-hour hotline, transitional housing, legal advocacy, case management, support groups, children's programs, sexual assault services	English, Korean	Children Youth Adult
Kedzie Center	Address: 4141 N. Kedzie Ave. Suite 2, Chicago IL 60618 Phone: 773.754.0577 Email: info@thekedziecenter.org Web: https://www.thekedziecenter.org/	Individual, couples and family, groups, psychiatric services two psychiatrists available one for adults and one for children), community services training in various psychoeducation topics with at risk populations and schools.	English, Spanish	Children Youth Adult LGBTQ+
Midwest Asian Health Association (MAHA)	Address: 230 W. Cermak Rd, 2nd Floor, Chicago, IL 60616 Phone: 312.225.8659 Email: info@maha.us.org Web: https://maha-us.org/	Individual therapy, couples therapy, family therapy, group therapy, school consultations, and community support, health education, screening, and immunization, substance abuse prevention and gambling awareness	English, Mandarin	Children Youth Adult
Metropolitan Family Services	Address: 101 North Wacker Drive, 17th Floor Chicago, IL 60606 Phone: 312.986.4000 Web: https://www.metrofamily.org/programs-and-services/emotional-wellness/	Individual, family/couples counseling, groups, psychiatry services, evaluations, medication management, case management, and community support	English, Spanish, Polish, Arabic	Children Youth Adult
Mujeres Latinas en Accion	Address: 2124 W. 21st Place Chicago, IL 60608 Phone: 773.890.7676 Web: https://mujereslatinasenaccion.org/	Crisis intervention, 24 hour crisis line, individual and group counseling, adult and child therapy, court advocacy, community education, professional and volunteer trainings, and referrals to shelters and other resources	Spanish	Adult LGBTQ+
Refugee One	Address: 5705 N Lincoln, Chicago, IL 60659 Phone: 773.989.5647 Hours: M-F 8:30am-4:30pm Web: https://www.refugeeone.org/cswws.html	Individual therapy, family therapy, group therapy, crisis intervention, short-term urgent care, home-based clinical services, medication evaluation/management	Amharic, Arabic, Assyrian, Burmese, English, Farsi, French, Iranian, Karen, Kiswahili, Pashto, Rohingya, Somali, Spanish, Tigrinya	Adult

FEDERALLY QUALIFIED HEALTH CENTERS

Federally funded nonprofit health centers or clinics that provide primary care services and behavioral health sciences regardless of your ability to pay.

ORGANIZATION	CONTACT INFORMATION	SERVICES	LANGUAGE	POPULATION
ACCESS Community Health Network	Address: 5159 S. Ashland Ave. Chicago, IL 60609 Phone: 773.434.9216 Web: https://www.achn.net/	Family practice, internal medicine, pediatrics, school and sports physicals, obstetric/gynecological and midwifery services, and ongoing management of chronic diseases	English, Spanish	Children Youth Adult
AHS Family Health Center	Address: 2424 W Peterson Ave, Chicago, IL 60659 Phone: 800.597.5077 Web: https://www.ahsfhc.org/	Adult Behavioral Health, Adult Medical Care, Blood Pressure & Diabetes Tests, Child Behavioral Health, Dental Services, Infant Care, School Physicals, Women's Health Care	Mandarin, Spanish, Arabic, Khmer, Tagalog, English	Children Youth Adult
Alivio Medical Clinic	Address: 966 W. 21st St. Chicago 60608 2355 S. Western Ave. Chicago 60608 Phone: 773.254.1400 Web: https://www.aliviomedicalcenter.org/	Adult & Family Medicine, Behavioral & Mental Health, COVID-19 Vaccine, Dentistry, Diabetes, Family Planning OB/GYN & Midwifery, Pediatrics, Pharmacy, Walk In Wellness Center	English Spanish	Children Youth Adult
Erie Family Health Center	Address: 1701 West Superior Chicago, IL 60622 Phone: 312.666.3494 Web: https://www.eriefamilyhealth.org/	Group and individual therapy, substance use services, medication assisted treatment program, women's support groups	English, Spanish	Youth Adult
Esperanza Health Center	Address: 4700 S. California Ave., Chicago, IL 60632 Phone: 773.584.6200 Web: https://www.esperanzachicago.org/	Behavioral Health; Substance Use; Psychiatry; Women's Health; Pediatrics; Adults	English, Spanish	Youth Adult
Hamdard Health Alliance	Address: 228 E. Lake Street Addison, IL 60101 Phone: 630.835.1430 Web: https://www.hamdardhealth.org/	Crisis intervention, psychiatric evaluation, medication management/monitoring, mental health intake assessments, individual psychotherapy, mindfulness.	Arabic, Bosnian, Hindi, Polish, Punjabi, Spanish, Urdu, English	Youth Adult
Tapestry 360 Health	Address: 845 W. Wilson Avenue Chicago, IL 60640 Phone: 773.506.4283 Web: https://tap360health.org/	Individual, family, group counseling, adult and child psychiatry, substance abuse counseling, and referrals to community resources.	Spanish Interpreter Available	Children Youth Adult

COMMUNITY MENTAL HEALTH CENTERS

A community-based facility or group of facilities providing prevention, treatment, and rehabilitation mental health services

ORGANIZATION	CONTACT INFORMATION	SERVICES	LANGUAGE	POPULATION
Chicago City Mental Health Center	Address: 4150 W. 55th Street, Chicago, IL 60632 Phone: 312.747.1020 Web: https://www.chicago.gov/city/en/depts/cdph/supp_info/behavioral-health/mental_health_centers.html	Individual and group therapy, psychiatric services, medication payment, case management	English, Spanish	Adult
Chicago Family Health Center	Address: South Chicago Health Center 9119 S. Exchange Avenue Chicago, IL 60617 Address: Chicago Lawn Health Center 3223 W. 63rd St. Chicago, IL 60629 Phone: 773.768.5000 Web: https://chicagofamilyhealth.org/	Assessment, individual, family, or couple's therapy	English, Spanish, Arabic	Children Youth Adult
Pilsen Wellness Center	Address: 2015 West Cermak Road Chicago, Illinois 60608 Phone: 773.579.0832 Web: pilsenwellnesscenter.org	Counseling & Treatment programs; Substance Use Disorder treatment; Housing & Residential programs; Employment Services; Youth services substance use program, substance prevention program, teen pregnancy prevention program, Teen Mom's program, Labor & Delivery Support for Teen Moms.	English, Spanish	Children Youth Adult
Trilogy Behavioral Health	Address: 1400 W Greenleaf Ave., Chicago, IL 60626 Phone: 773.508.6100 Web: https://www.trilogyinc.org/	Psychiatric and general health condition services	English, Spanish	Adult
Live Oak	Address: 1300 W. Belmont Ave. #400 Chicago, IL 60657 Phone: 773.880.1310 Web: https://liveoakchicago.com/	Individual/family/group counseling specializing in LGBTQ and trauma	Spanish, Mandarin, Hindi, Polish, English	Children Youth Adult LGBTQ+





**COMMUNITY RESOURCE
GUIDE FOR MENTAL HEALTH**



AT THE FOREFRONT
**UChicago
Medicine**



**Asian
Health
Coalition**

CENTER FOR ASIAN HEALTH EQUITY